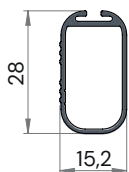


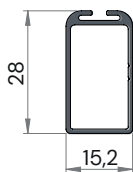


Manual de Montagem  
*Manual de Instalación*

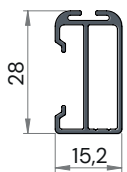
CABIDEIRO  
**CINTRE**



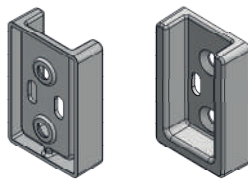
RM-137



RM-354



RM-369



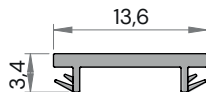
Suporte lateral dir/esq  
*Espanhol*



Peso máximo:  
12 Kg/m



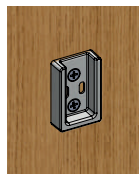
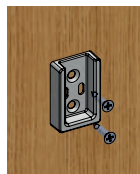
Baguete BG-223  
*Espanhol*



Difusor DF-001  
*Espanhol*

1

**Alinhe os suportes e fixe-os.** *Alinee los soportes y asegúrelos.*



Parafuso (tornillo) indicado: 3,5 x 14 CC.

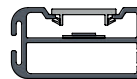
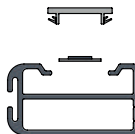
2

**Corte o perfil conforme a aplicação.** *Cortar el perfil según la aplicación.*



Máx. 1000 mm

Perfil = vão - 5mm

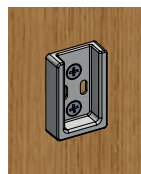
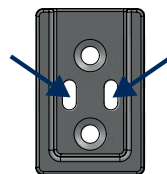
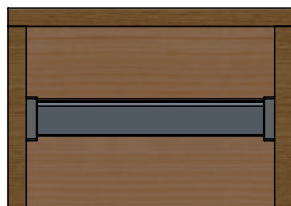
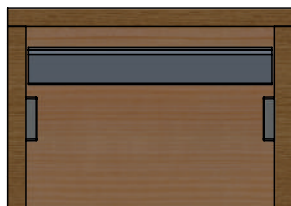


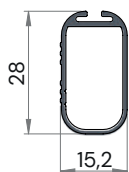
Para RM-369, insira a fita de Led e o difusor no perfil.

*Para RM-369, inserte la tira de Led y el difusor en el perfil.*

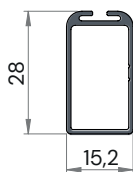
3

**Encaixe o perfil no suporte.** *Se necessário, use os furos para a passagem dos cabos.* *Ajustar el perfil al soporte. Si es necesario, utilice los orificios para el paso de los cables.*

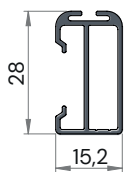




RM-137



RM-354



RM-369



*Suporte topo central*  
*Espanhol*



*Suporte topo lateral dir/esq*  
*Espanhol*



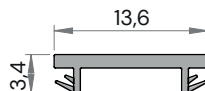
*Fixador MDF*  
*Espanhol*



*Fixador alumínio*  
*Espanhol*



*Baguete BG-223*  
*Espanhol*



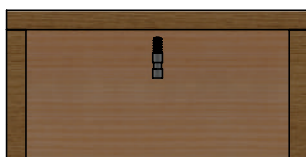
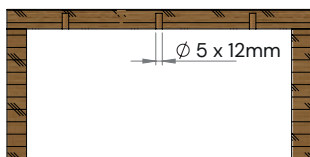
*Difusor DF-001*  
*Espanhol*



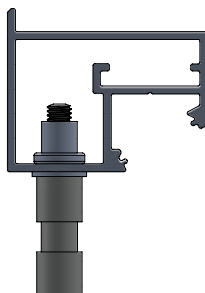
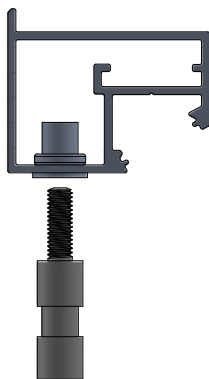
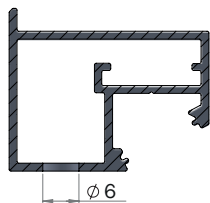
*Peso máximo:*  
*12 Kg/m*

**1** **Furação e instalação.** *Perforación e instalación.*

MDF



Alumínio



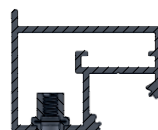
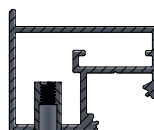
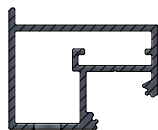
Indicado para alumínio com espessura de 0,8 a 2,5 mm e seção interna mínima de 12x12 mm.

*Adecuado para aluminio grueso de 0,8 a 2,5 mm y sección interior mínima de 12x12 mm.*

Insira a porca rebite M4 e rebite-a.  
*Inserte la tuerca remache M4 y remache.*

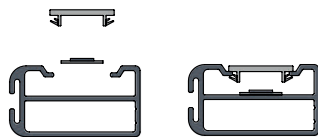
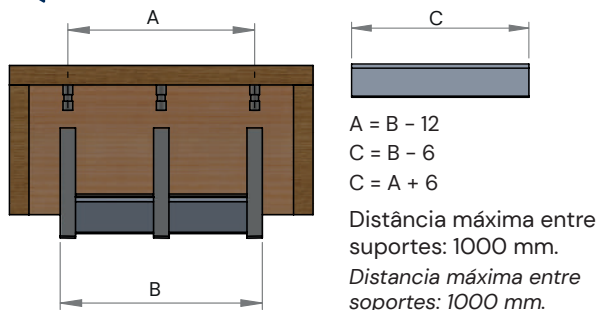
\*Para a montagem é necessário um rebitador de porca rebite M4.

*\*Se requiere una remachadora para el montaje de tuerca de remache M4.*



3

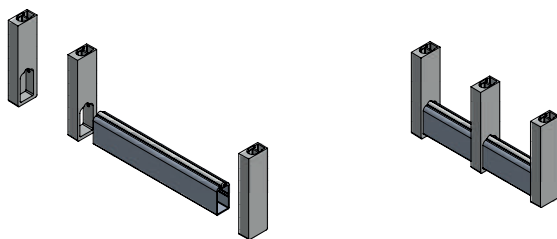
**Corte o perfil conforme a aplicação.** *Cortar el perfil según la aplicación.*



Para RM-369, insira a fita de Led e o difusor no perfil.  
 Para RM-369, inserte la tira de Led y el difusor en el perfil.

4

**Insira os suportes no perfil.** *Insertar los soportes en el perfil.*



5

**Encaixe o conjunto nos suportes e aperte os parafusos.** *Coloque el conjunto en los soportes y apriete los tornillos.*



Se necessário, fure o perfil e use os furos para a passagem dos cabos.

*Si es necesario, taladrar el perfil y utilizar los agujeros para el paso de los cables.*